

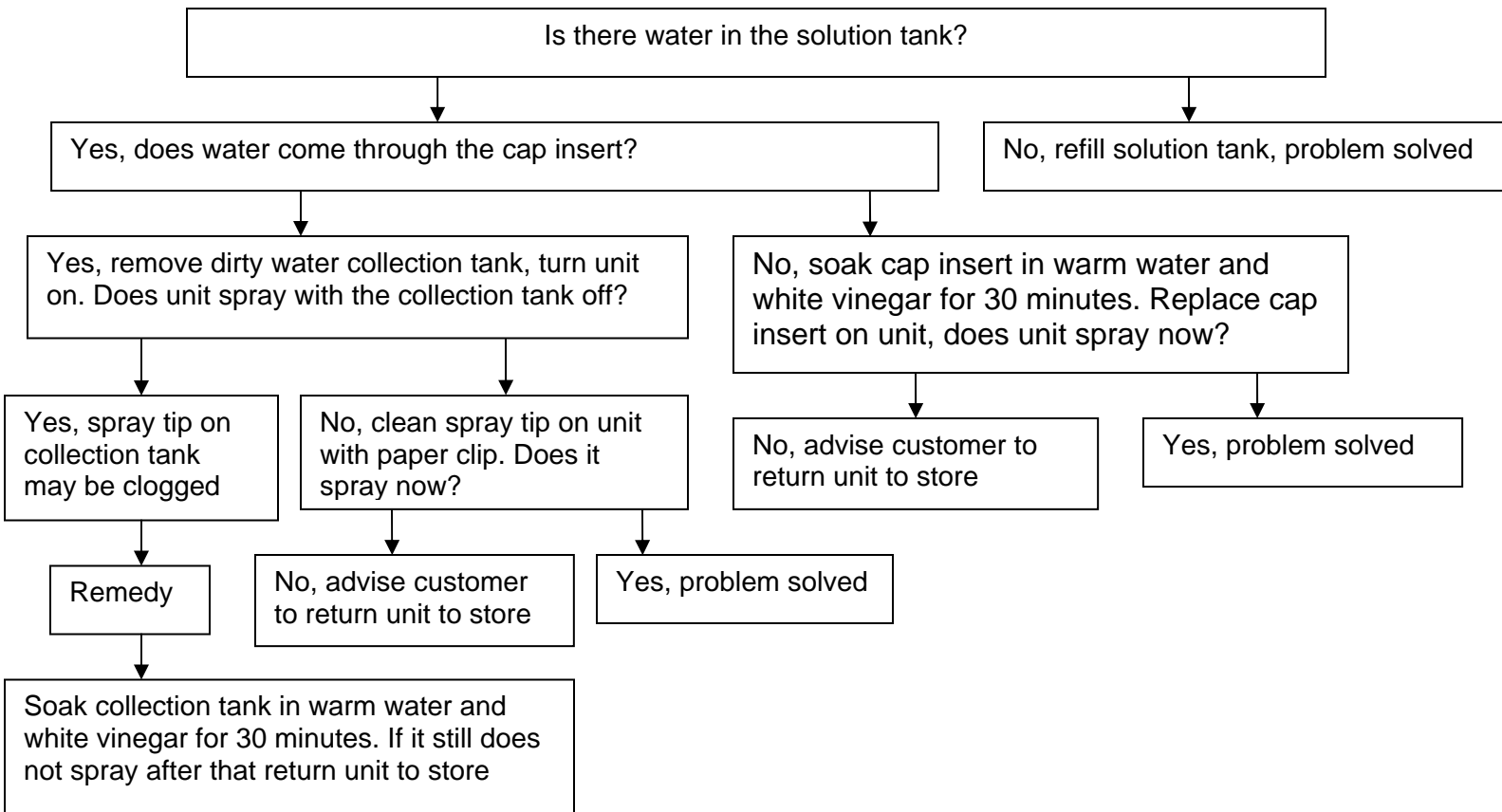
Troubleshooting Bissell Spotlifter BS-1715F

CONTENTS PAGE

Consumer states unit will not spray but does have suction	Page 2
Consumer states unit has low/no suction	Page 3
Consumer states unit is spitting out the side vents	Page 5
Consumer states solution tank leaks from the round black vent seal	Page 6
Consumer states unit will not charge	Page 7
Consumer states they are not satisfied with the 5 minute run time of the unit.....	Page 8
Consumer states the unit's charge will not last 5 to 7 minutes	Page 9
Consumer states the unit has a blown fuse	Page 10

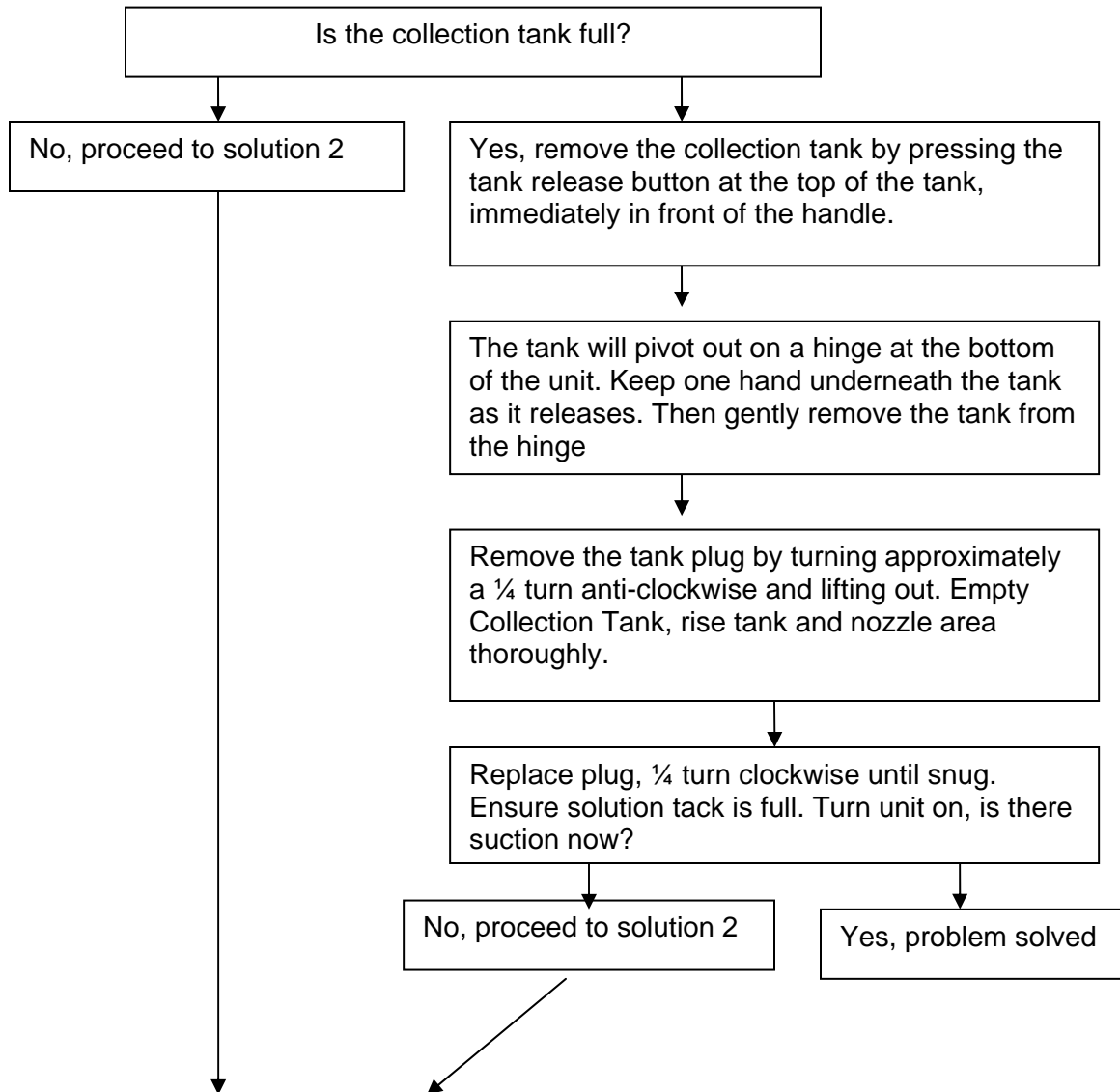
Consumer states unit will not spray but does have suction

Solution 1:

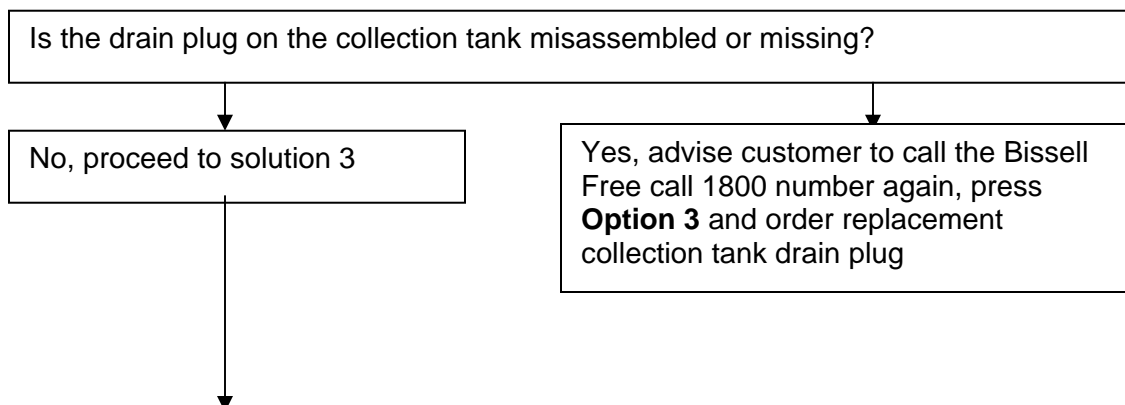


Consumer states unit has **low/no suction**

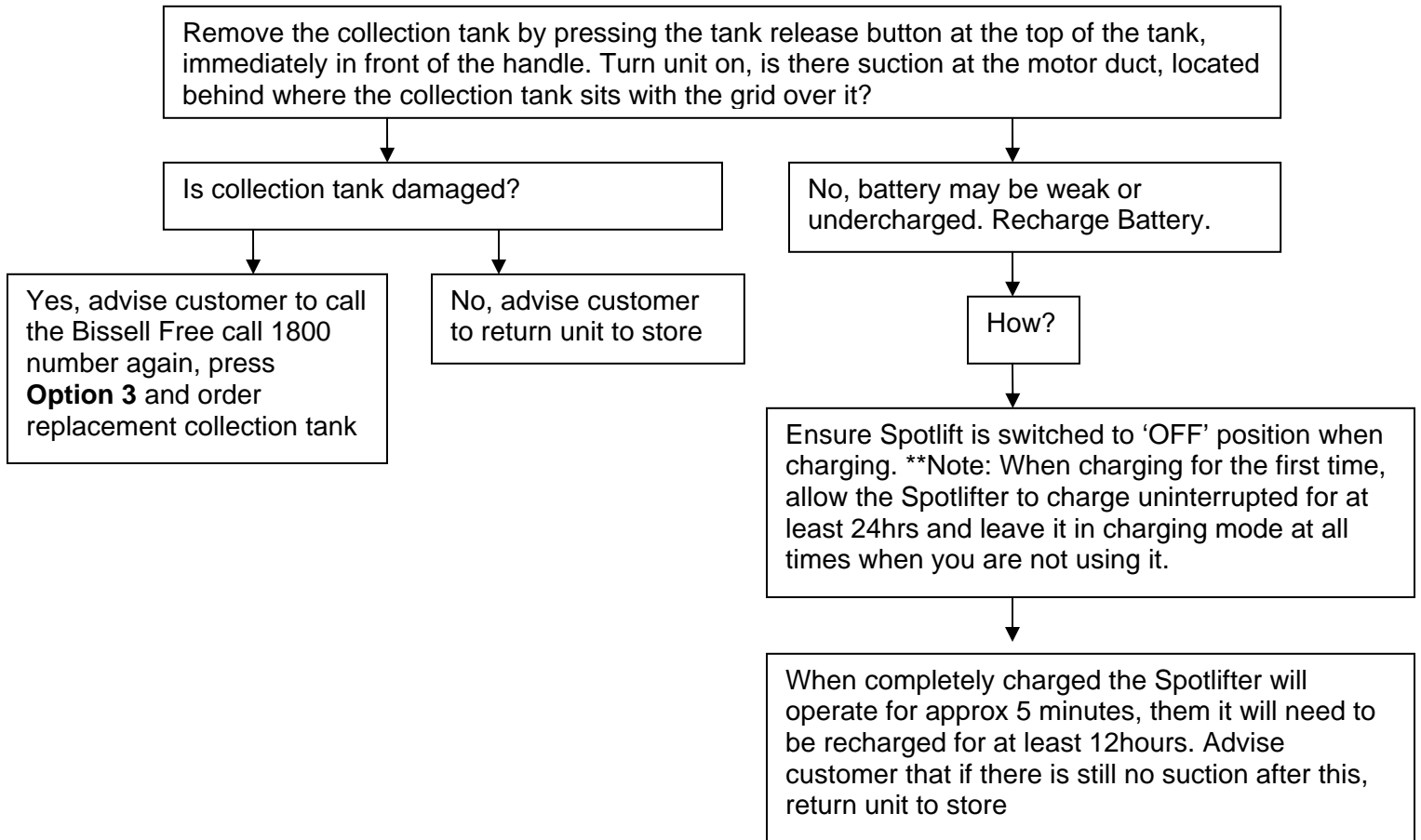
Solution 1:



Solution 2:

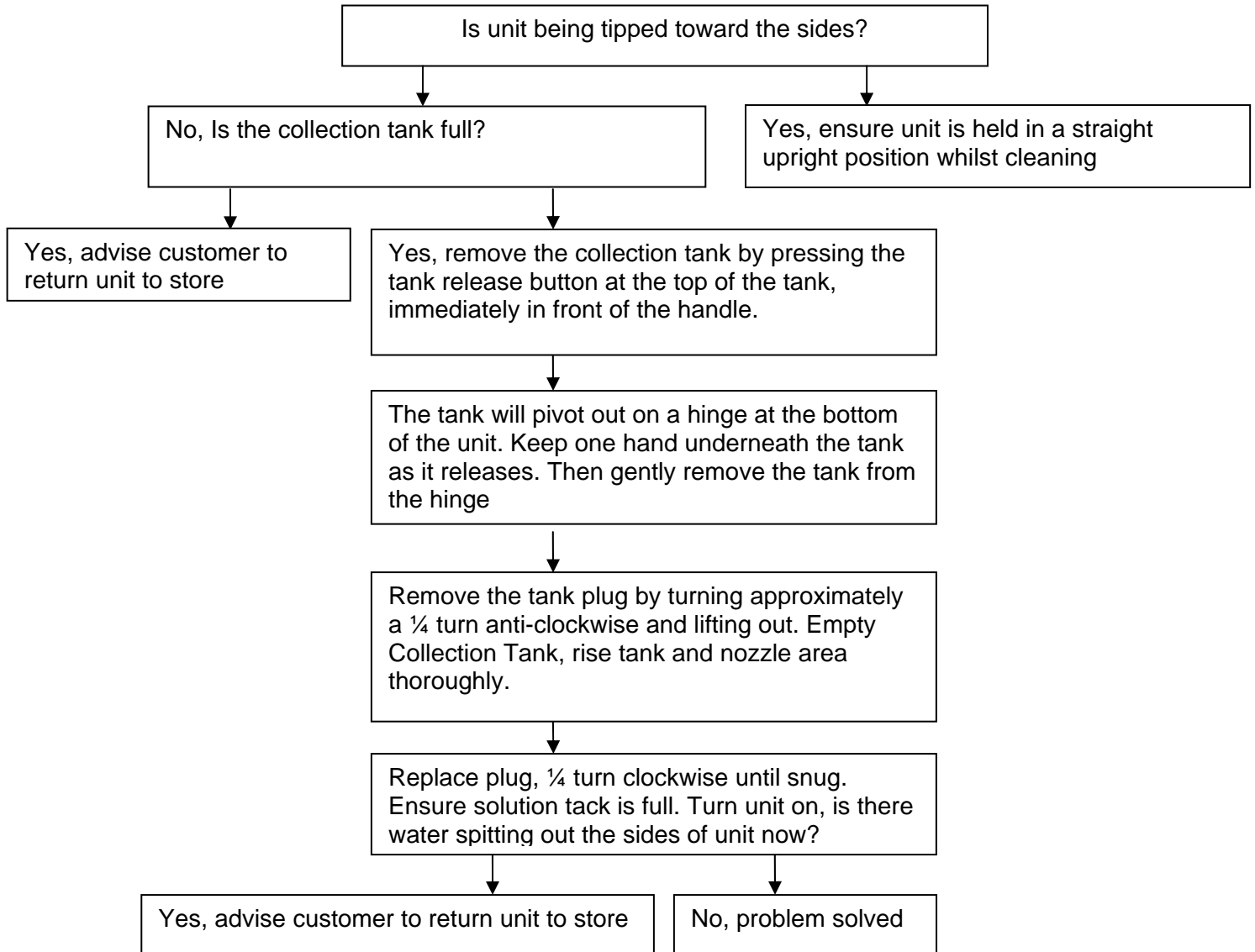


Solution 3:



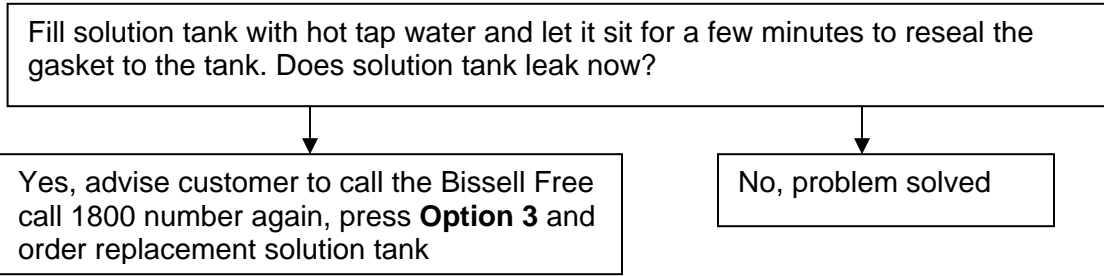
Consumer states unit is spitting out the side vents

Solution 1:



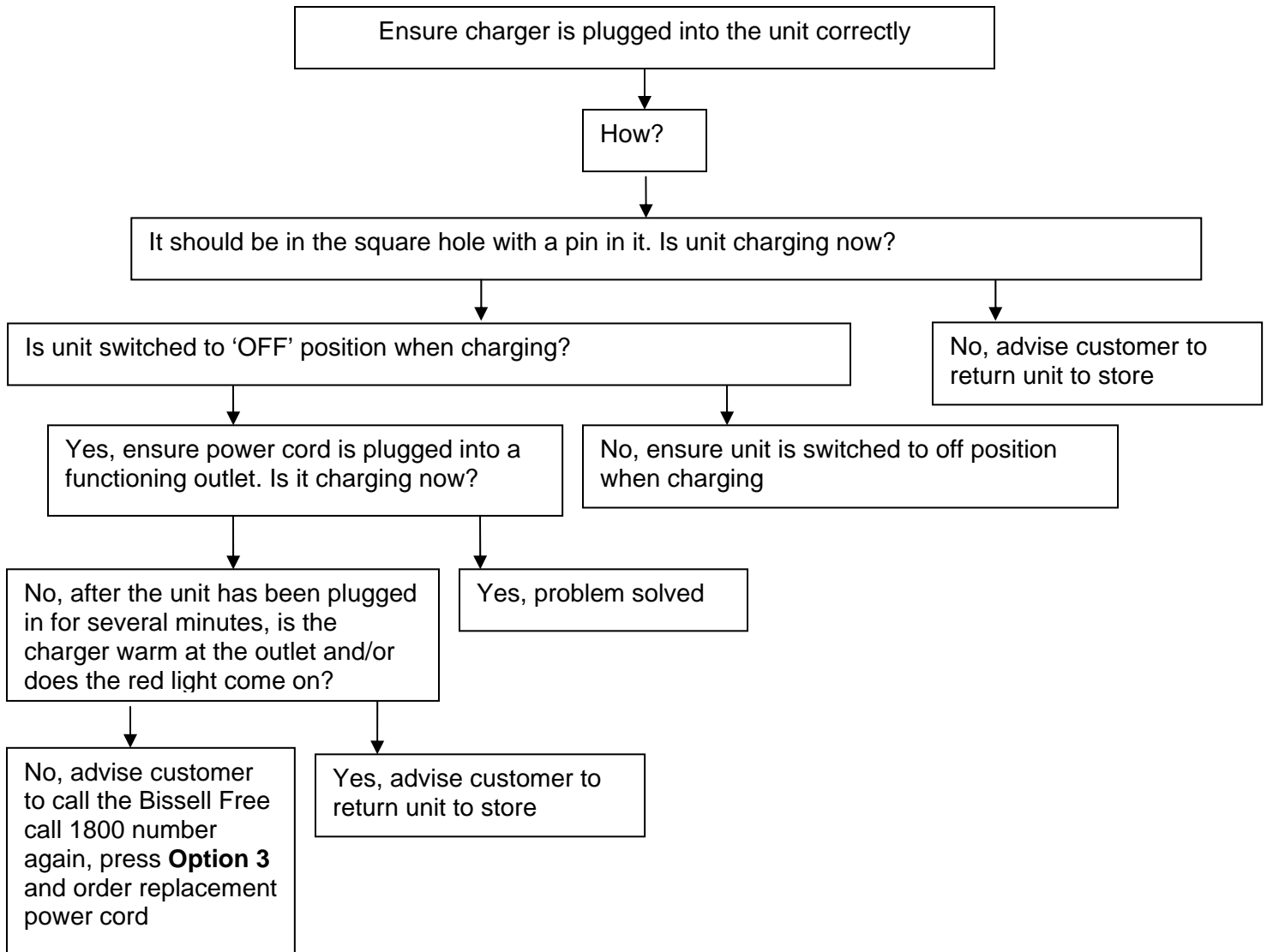
Consumer states **solution tank leaks from the round black vent seal**

Solution 1:



Consumer states unit will not charge

Solution 1:



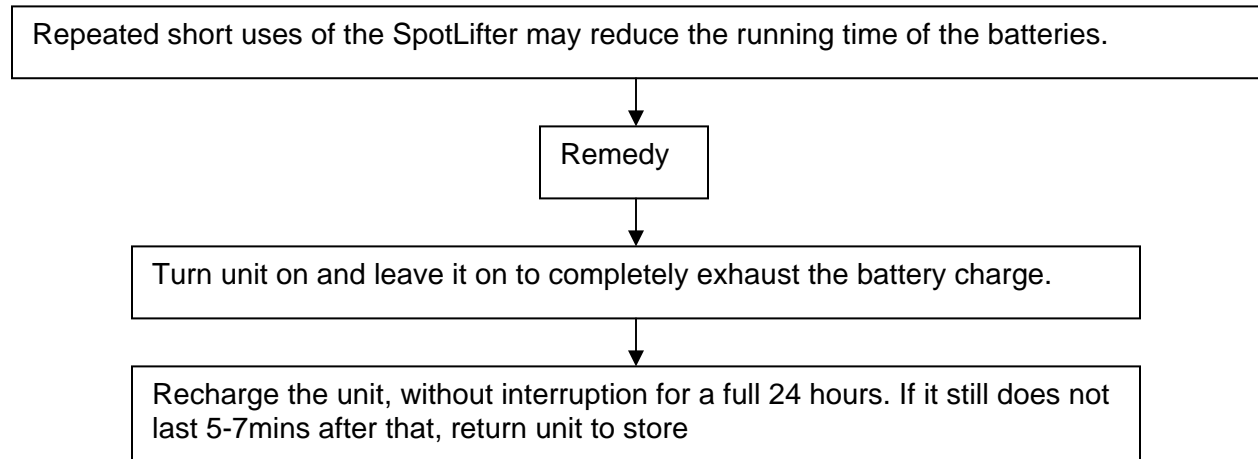
Consumer states they are **not satisfied with the 5 minute run time** of the unit

Solution 1:

The unit is designed to remove spots as they occur, not for cleaning large areas. Advise customer of Bissell deep cleaner range that are specifically designed to clean larger areas (Proheat, Powerwash, Quickwash, and Little Green)

Consumer states the unit's charge will not last 5 to 7 minutes

Solution 1:



Consumer states the **unit has a blown fuse**

Solution 1:

This is an unusual situation however, this is a safety feature of the product designed to prevent the unit from overheating.



Advise customer to return unit to store